

Executive Director Nursing and Midwifery Services

SCOPE
Provide professional, operational and advisory support to the Nursing and Midwifery stream.

Executive Director Medical Services

SCOPE
Provide professional, operational and advisory support to the Medical stream.

Executive Director Allied Health

SCOPE
Provide professional, operational and advisory support to Allied Health services and staff.

Executive Director Aboriginal and Torres Strait Islander Health Services

SCOPE
Provide strategic leadership, and high-level authoritative guidance and advice on the strategic directions, priorities and policy development in relation to the health and wellbeing of Aboriginal and Torres Strait Islander peoples.

Executive Director Mental Health and Specialised Services

SCOPE
Provide operational oversight to the Mental Health services and staff, including Alcohol and Drug Services and Prison Health Services.

Chief Operating Officer

SCOPE
Provide operational oversight to WBHHS facilities, ensuring work units and divisions deliver service priorities.

Executive Director Human Resources

SCOPE
Provide leadership to WBHHS regarding Human Relations and workforce services.

Executive Director Finance and Performance

SCOPE
Provide leadership to WBHHS to guide sustainable and financially sound business decisions, ensuring quality patient care is delivered.

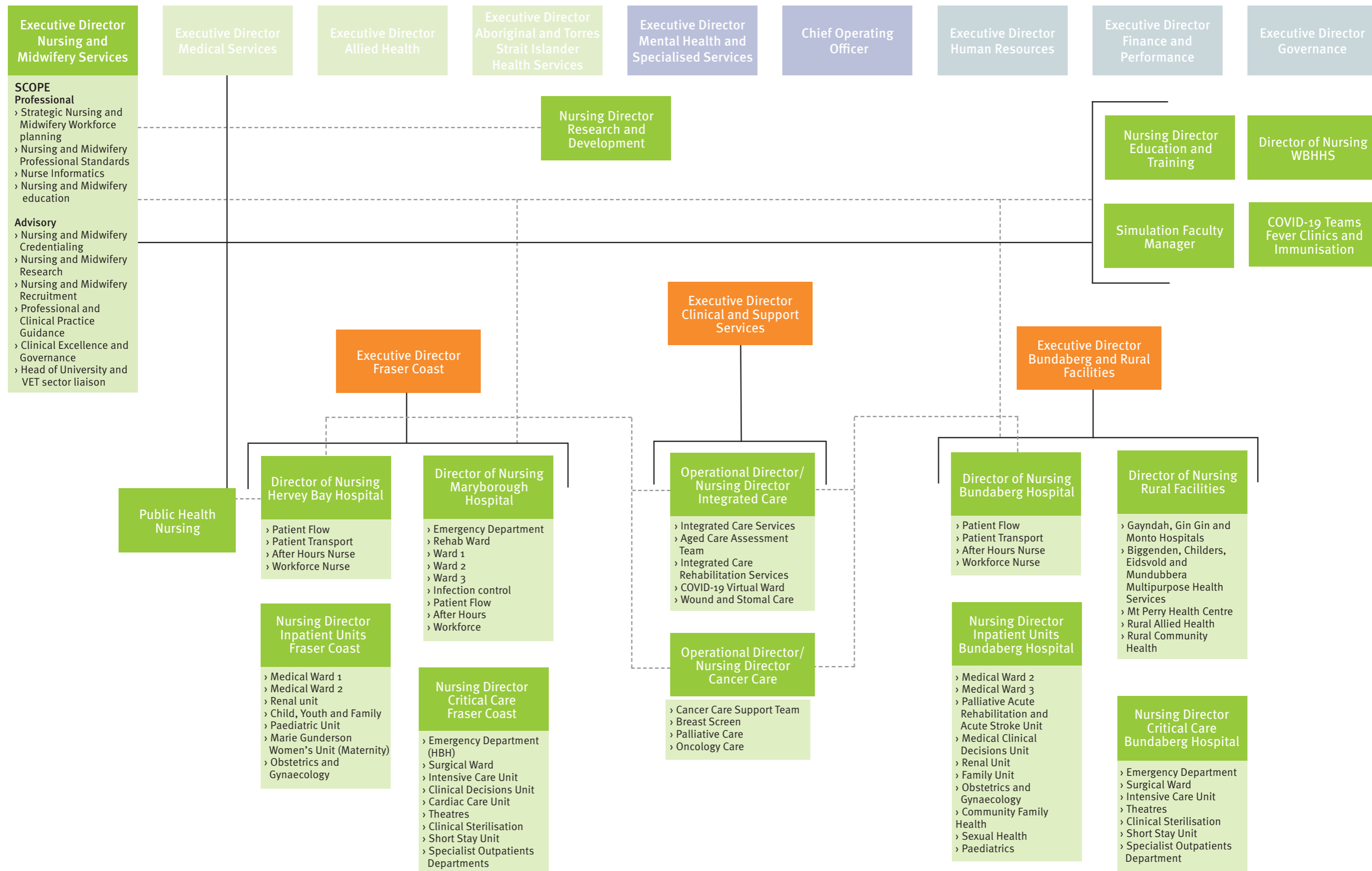
Executive Director Governance

SCOPE
Provide leadership to WBHHS to ensure governance, legislative, risk, planning, and safety and quality objectives are supported throughout the HHS.

Professional Directorates - Stream Leadership
Executive Directors and other professional leads promote and drive their profession at a strategic level. These roles provide assistance to Managers and Clinicians to promote a culture of high-quality, evidence-based, efficient and safe patient care. Professional leads are also expected to lead sustainability and improvement initiatives.

Clinical Service - Operational Leadership
The Executive Directors, Operational Executives and other clinical leads work in a collaborative manner to provide integrated patient care across the continuum and geography of WBHHS. These roles are supported by the Professional and Support Directorates.

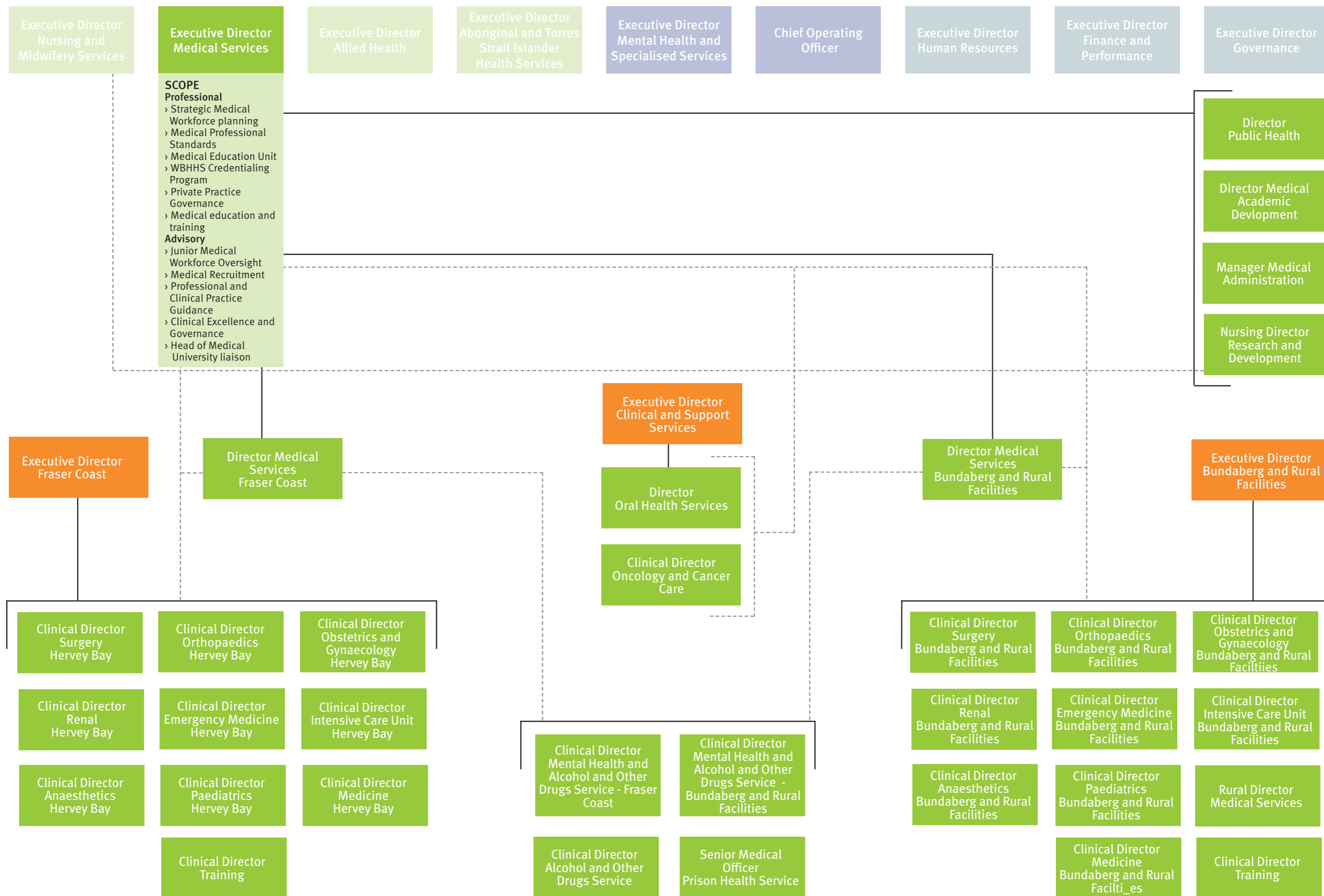
Support Directorates - HHS-wide Leadership
The Support Directorates work in collaboration with the Clinical and Professional areas to support the provision of quality care, every day. The Executive Directors and other staff support WBHHS to promote organisational accountability and systems to support HHS decision making. In particular, the Support Directorates and their respective Executive Directors lead a range of governance, finance and HR/IR functions.

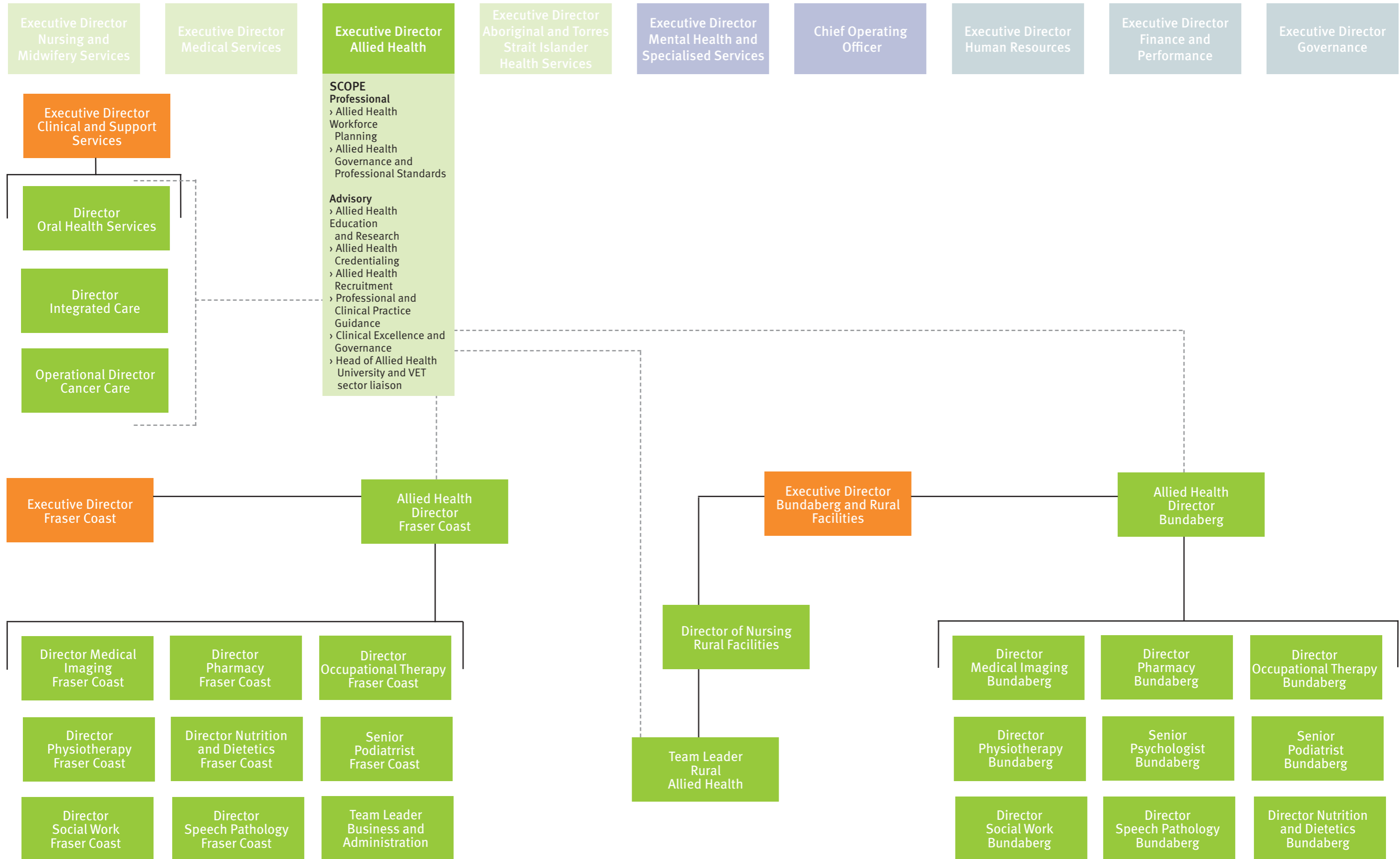


***Note**

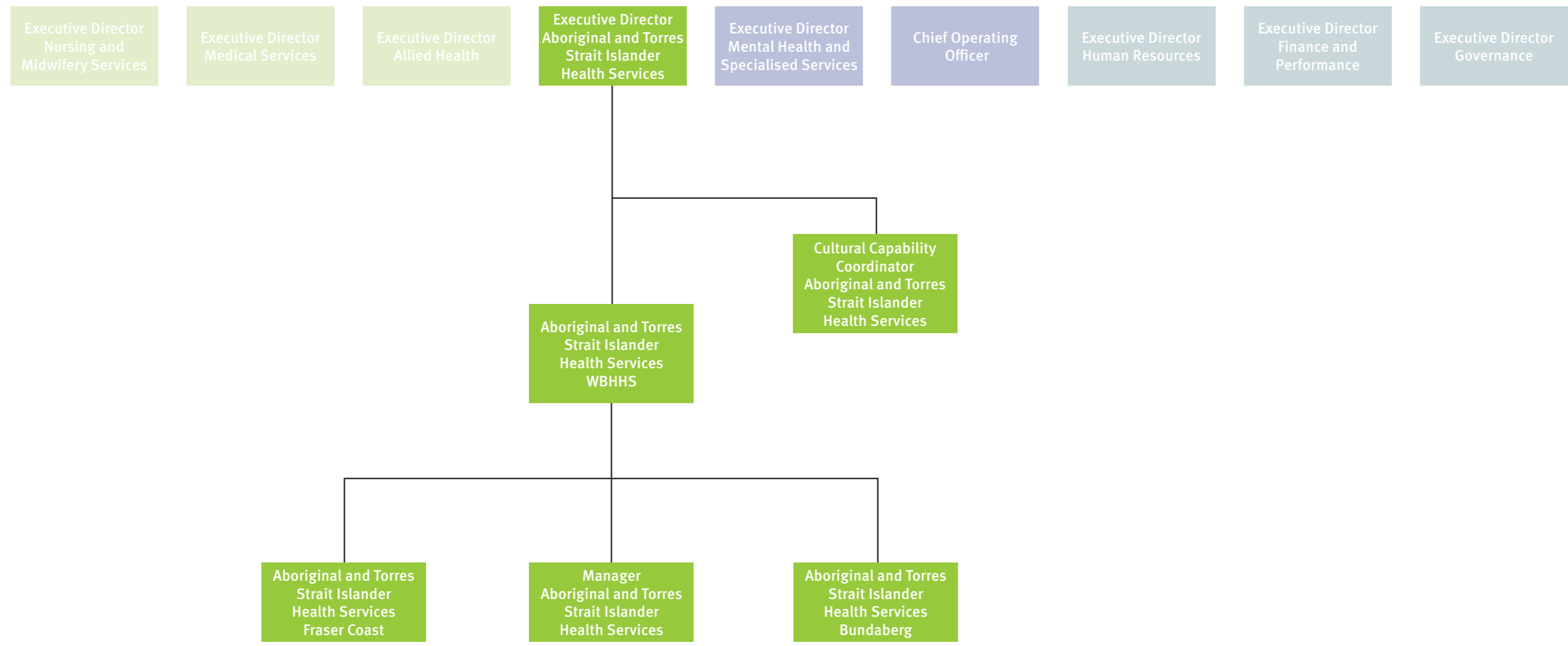
Staff within the Nursing and Midwifery stream work across Wide Bay Hospital and Health Service in various roles and positions.

The Executive Director Nursing and Midwifery Services provides professional support to staff within the Nursing and Midwifery stream, regardless of their operational reporting line.

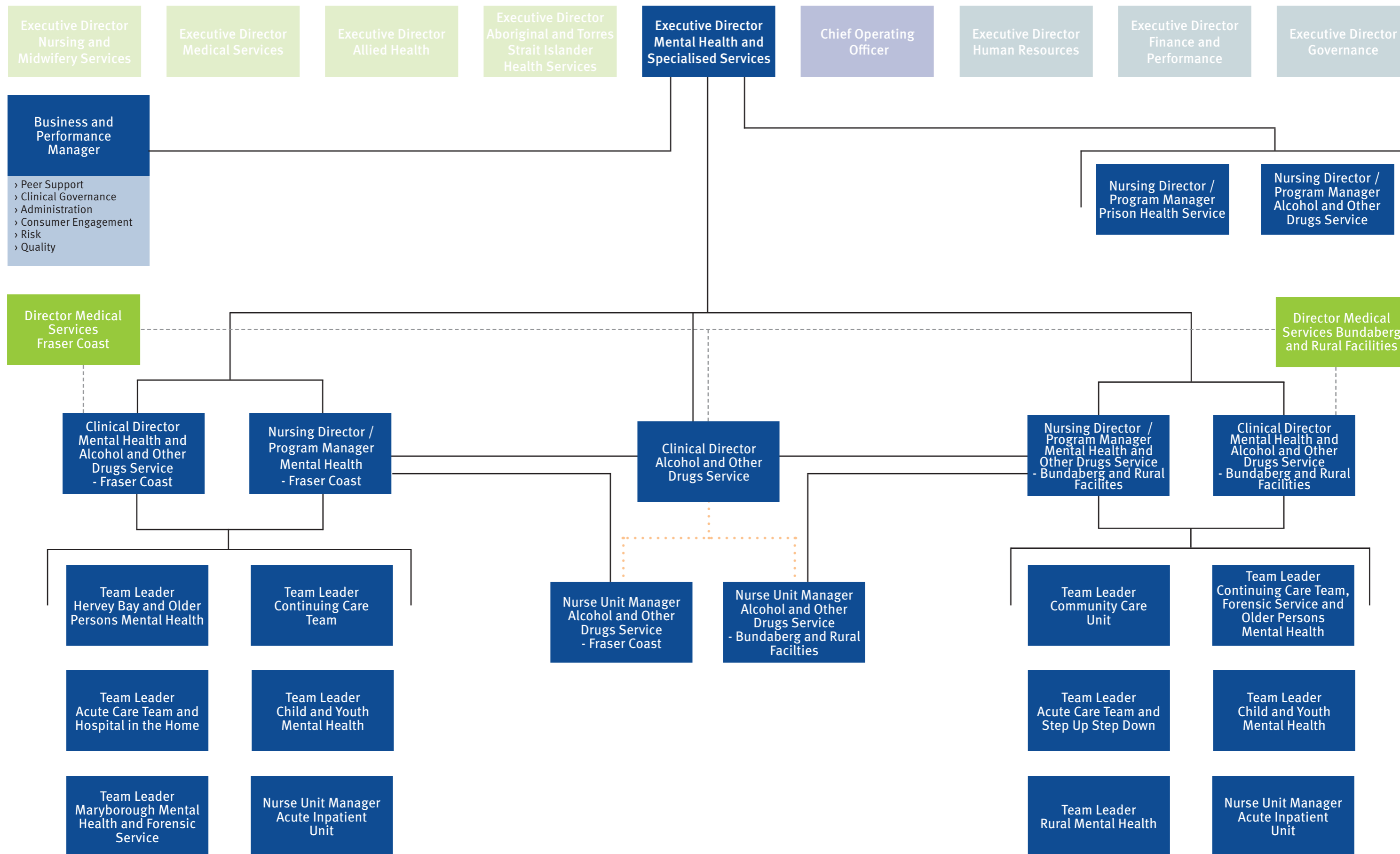




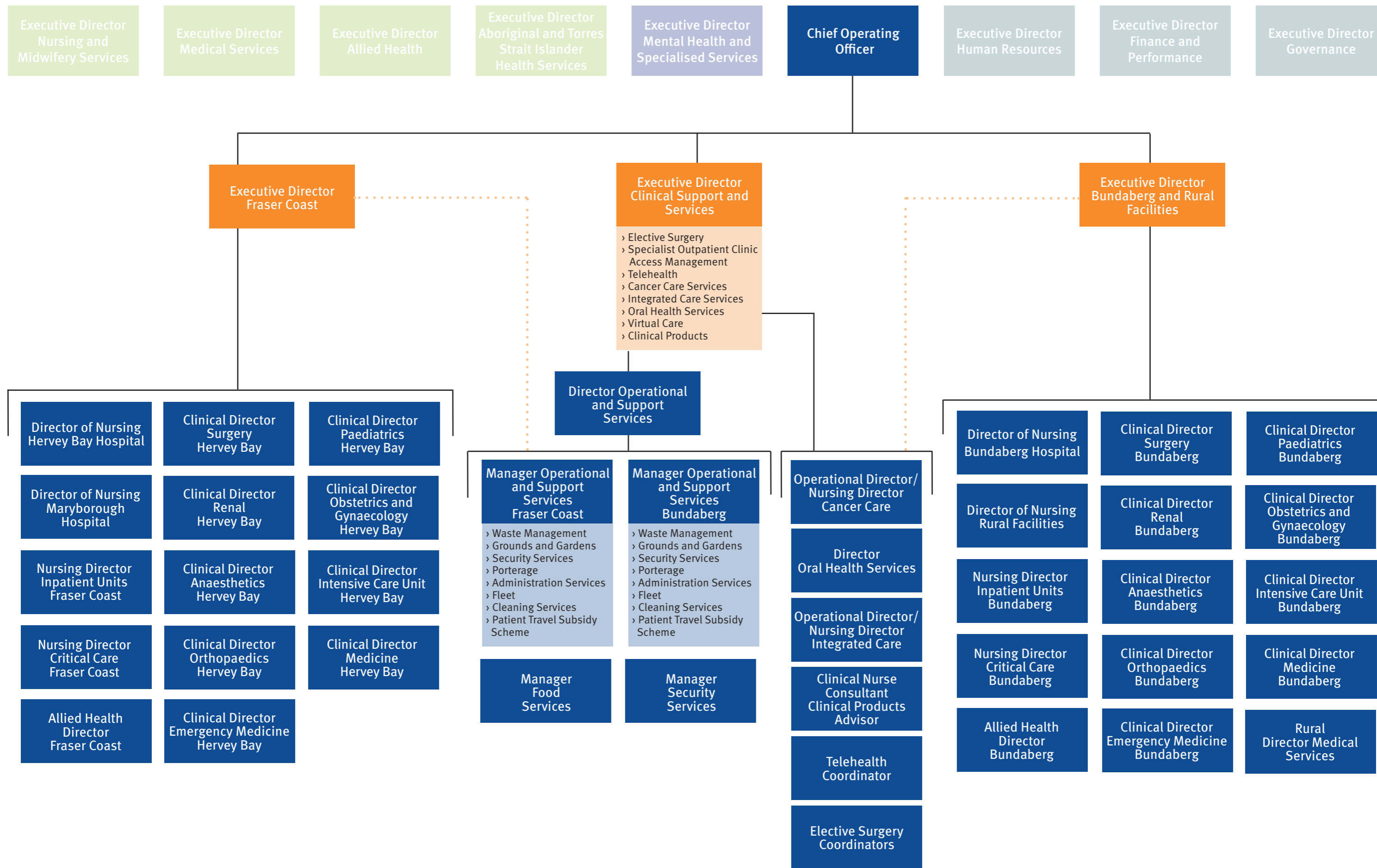
*Note
 Staff within the Allied Health stream work across Wide Bay Hospital and Health Service in various roles and positions.
 The Executive Director Allied Health provides professional support to Allied Health staff, regardless of their operational reporting line.



*Note
 Staff within the Allied Health stream work across Wide Bay Hospital and Health Service in various roles and positions.
 The Executive Director Allied Health provides professional support to Allied Health staff, regardless of their operational reporting line.



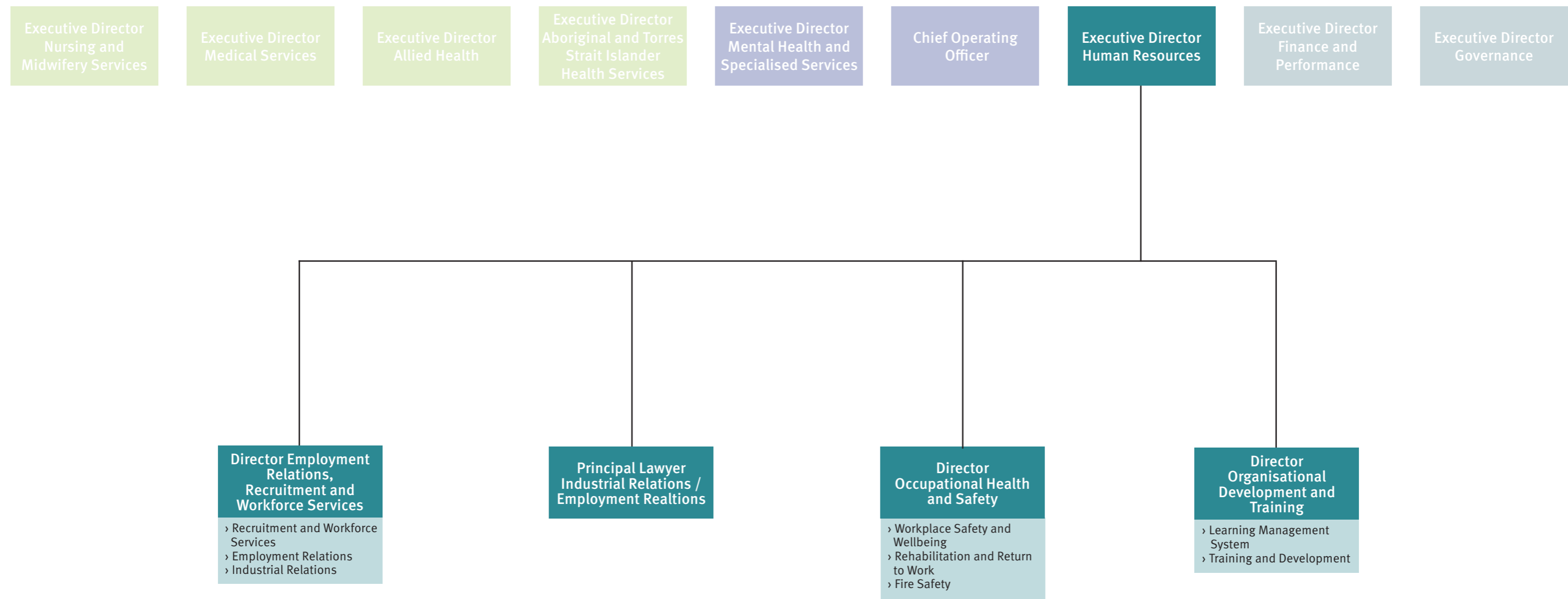
*Note
 Mental Health and Specialised Services is a multidisciplinary stream. As such, the positions of Nursing Director / Program Manager Mental Health and Alcohol and Other Drugs Service, both North and South, and the Nursing Director / Program Manager Alcohol and Other Drugs Service position can be flexibly filled by individuals from either the Nursing or Allied Health disciplines. These positions would then report professionally to the appropriate Executive - either the Executive Director Nursing and Midwifery Services or the Executive Director Allied Health.
 The Nurse Unit Manager Alcohol and Other Drugs Service (North or South) positions are line managed by the respective Nursing Director/Program Manager Mental Health (North or South), and also have an operational relationship with the Clinical Director Alcohol and Other Drugs Service.

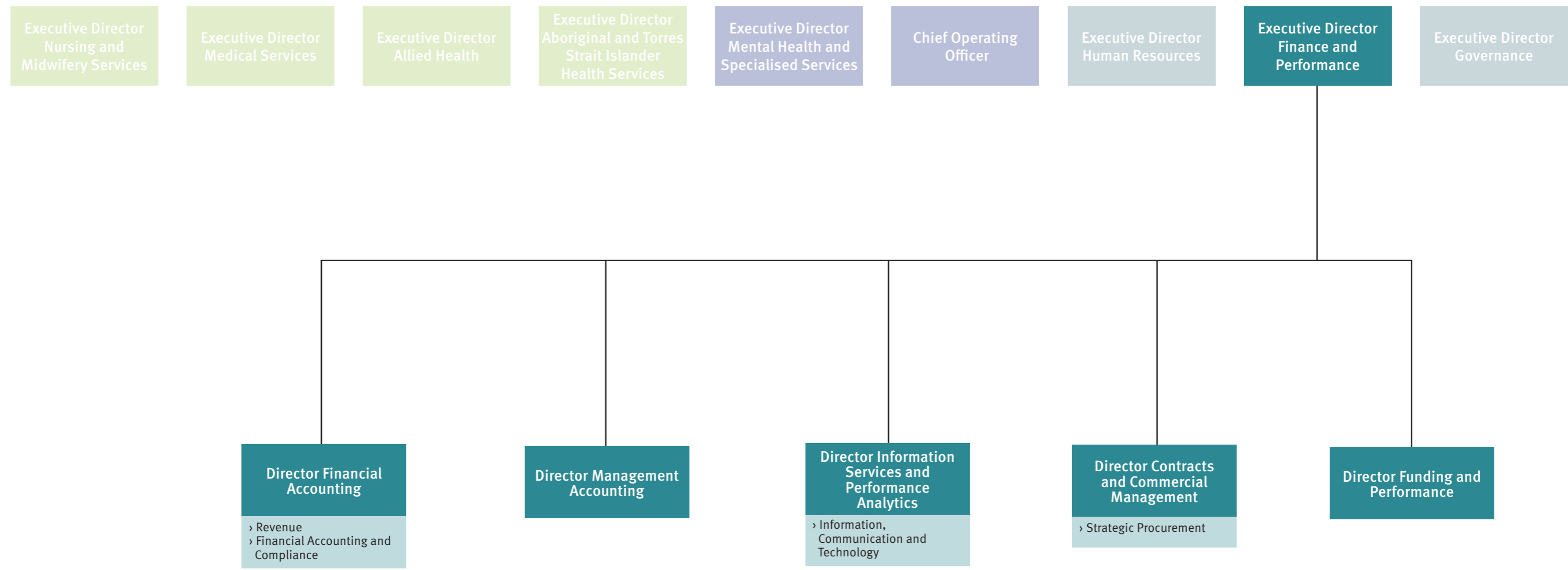


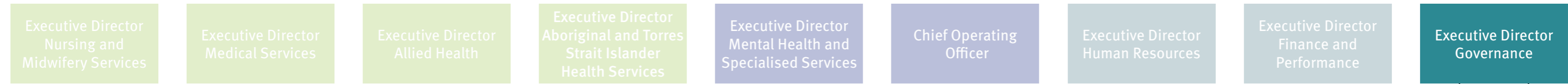
*Note

The positions of Director Integrated Care and Operational Director Cancer Care can be flexibly filled by individuals from either the Nursing or Allied Health disciplines. These positions would then report professionally to the appropriate Executive - either the Executive Director Nursing and Midwifery Services or the Executive Director Allied Health.

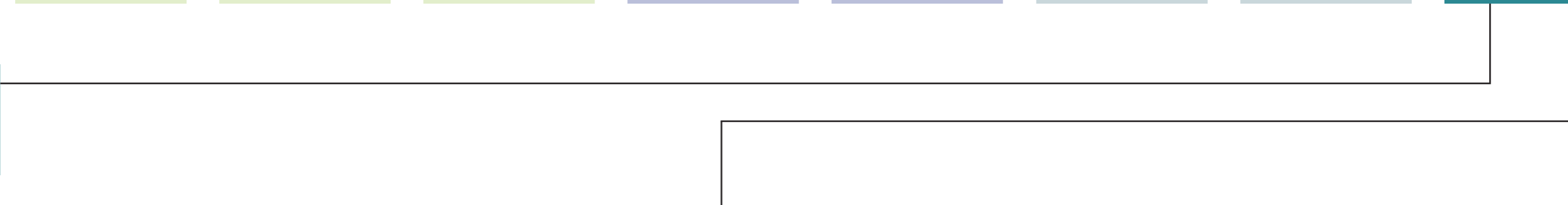
The Manager Operational and Support Services positions are line managed by the Director Operational and Support Services, and also have an operational relationship with the Executive Director Facilities positions.







- › Strategic and Health Service planning
- › Ministerial and Departmental correspondence/liaison
- › Executive Governance



Director Clinical Governance

- › Independent Patient Rights Advisor
- › Consumer Feedback
- › Clinical Incident Management
- › Clinical Audit
- › Open Disclosure
- › Policy and Procedure
- › Quality Standards and Accreditation

Director Media and Communications

- › Media
- › Digital Communications
- › Graphic Design

Manager Consumer and Community Engagement

- › Community Engagement
- › Volunteer Services
- › Patient Experience
- › Spiritual Care

Director Service Transformation and Redesign

- › Service Redesign
- › Sustainability Projects
- › Project Management

Director Board Governance

- › Board Services
- › Office of the Health Statutory Authority

Manager Risk and Compliance

- › Risk Management
- › Compliance
- › Internal Audit