

# Let's yarn new Bundaberg Hospital project

## Snapshot survey results

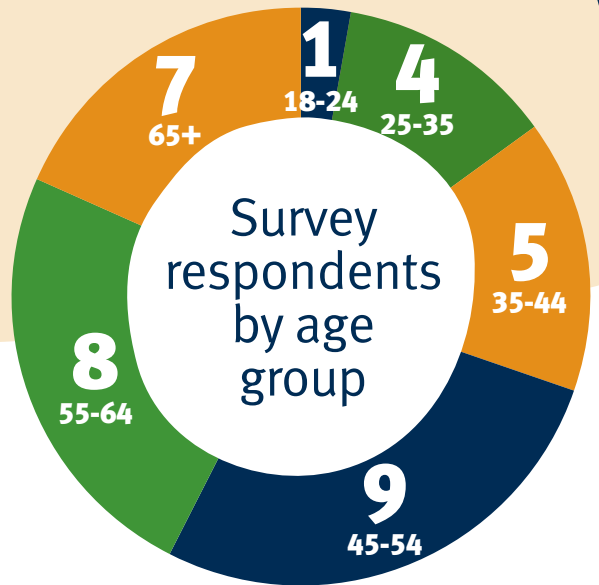
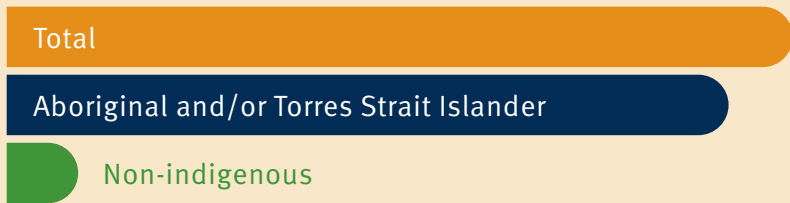
It is important that all communities that use the new Bundaberg Hospital feel culturally welcome, safe and able to access compassionate and equitable care.

Wide Bay Hospital and Health Service conducted a cultural considerations survey for the new hospital project from 24 October to 22 November 2024. The survey aimed to gather insights and stories to help shape aspects of the design such as storytelling integration, cultural features and colour/plant selections.

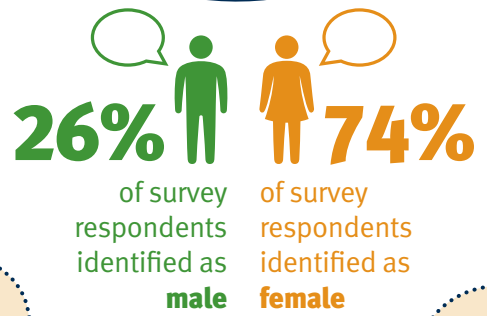
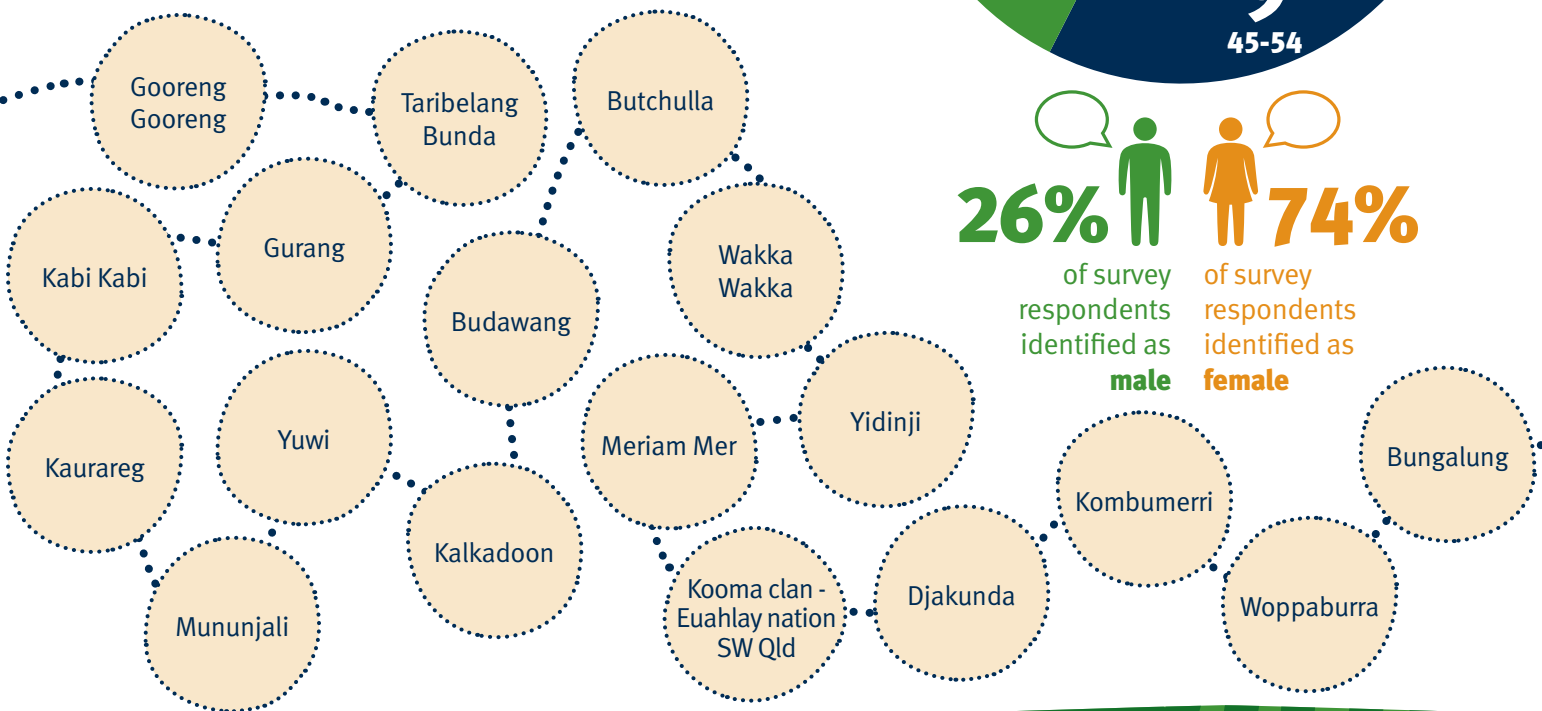
Distributed through an online platform, printed hard-copies, in-person delivery to patients and Community, local Aboriginal and Torres Strait Islander organisations, and local and state government stakeholders, the survey engaged a range of participants.



The cultural considerations survey captured the views and stories of 34 community members, 31 of whom identified as Aboriginal and/or Torres Strait Islander.



Responses were received from local Aboriginal, Torres Strait Islander and/or Australian South Sea Islander peoples representing 18 First Nations communities.



Survey responses indicated a strong association with natural and earthy tones such as ochre, reds, yellows and oranges, symbolising strength, grounding and connection to Country, as well as greens and blues, representing water, plant life, the sky and renewal, all linked to healing and wellbeing.

Some respondents also emphasised pastel colours and softer tones for their calming and restorative effects, while white and purple were seen as representing guidance, clarity, spirituality and protection.

ocean blue ochre earth tones red  
water pastel colours sea yellow calming  
soft white blue land earthy  
plants bright colours green sky  
purple healing brown orange  
wellbeing calming rainbow softer tones

We appreciated the diverse range of suggestions regarding Aboriginal and Torres Strait Islander artists with connections to the local area who may be interested in future art opportunities.

The emphasis on engaging artists whose work reflects local cultural heritage and stories was particularly valuable. This feedback will be shared with our Arts in Health Program Working Group.

Important features when arriving at the new hospital:



1

Artwork and cultural displays



2

Clear signage



3

Volunteers to help with directions



4

Comfortable seating



5

Greenery and native plants



6

Health information



7

Maps



8

Natural light

There was a strong desire to incorporate local cultural features and stories into the design of the new Bundaberg Hospital. Key suggestions included:

### Art and design

Many felt it was important to include cultural artwork throughout the new hospital, including murals, and the use of traditional and non-traditional icons and symbols. This could also extend beyond framed pieces (e.g., woven into walls and walkways).

### Connection to local landscape

Many responses emphasised incorporating local geographical features such as the Burnett River, Mon Repos, Hummock and nearby waterways and coastal areas. References to local native plants (e.g., paperbark, stringybark trees, mangroves, macadamia nuts) and wildlife (e.g., birds and fish) were mentioned as integral to the design.

### Healing and cultural gardens

A bush medicine garden and native healing plants were suggested, along with the inclusion of native plant gardens that could be accessible to both patients and visitors.

### Stories and language

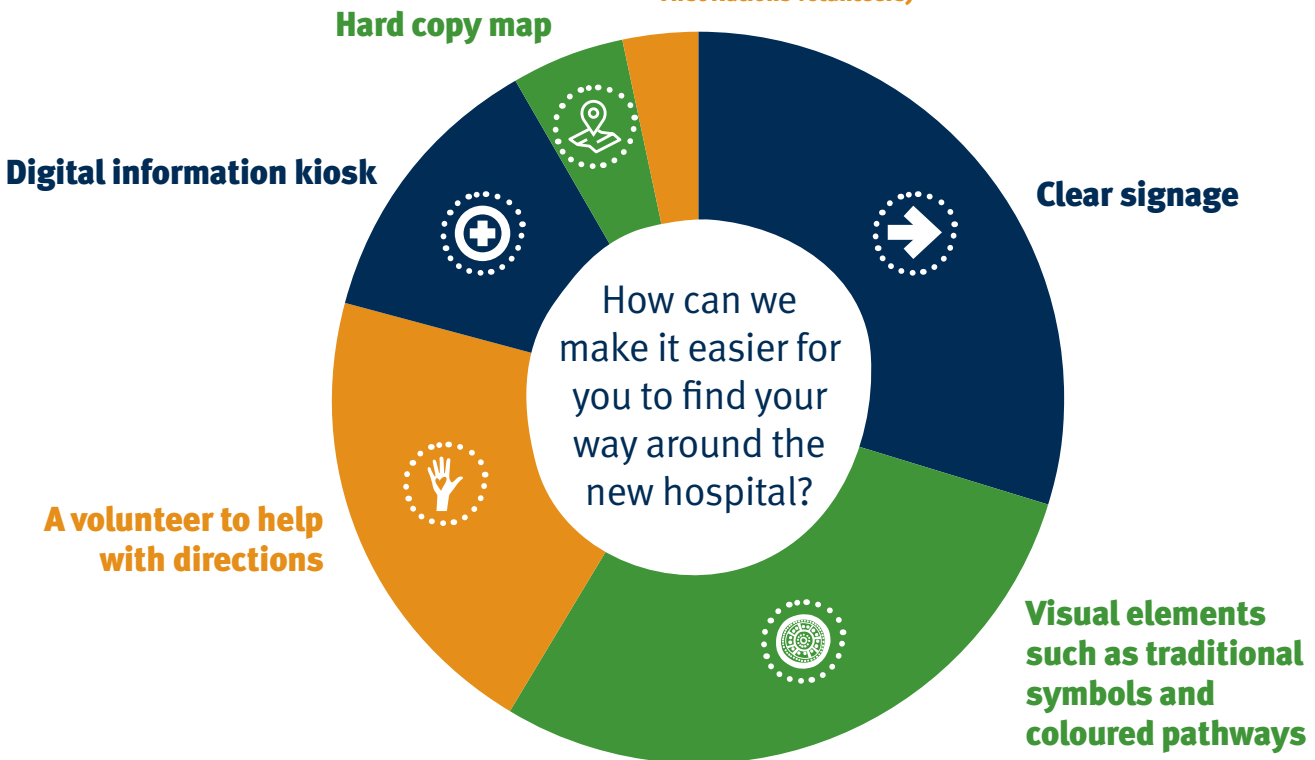
Respondents emphasised the importance of local stories, cultural landmarks, connection to ancestors and Country, dreaming stories, song lines, particularly around local clan groups, animals (such as turtles, kangaroos and fish), and totems. Language should also be integrated, whether through signs or artwork.

### Spaces for community

Suggestions included creating family rooms for cultural gatherings for mob to gather, especially for important family moments, and providing spaces for mutual meeting and private reflection.

### Other suggestions

(e.g., cultural seating and First Nations volunteers)



The new hospital will have dedicated spaces for Aboriginal and/or Torres Strait Islander peoples to gather. Survey feedback emphasised the need for these spaces to be culturally respectful and accessible, with requests for natural, calming elements like plants, water features and traditional art. Respondents also highlighted the importance of providing comfortable, accessible seating, especially for Elders and people with disabilities, and incorporating spiritual spaces such as yarning circles and areas for smoking ceremonies.



## Where to from here?

The insights gathered through this survey are invaluable and will play a crucial role in shaping the final design of the new hospital. Our commitment to creating a culturally inclusive and welcoming healthcare environment remains a top priority.

We extend our sincere thanks to all survey participants for sharing their voices and perspectives. Your input is essential in helping to design a space that reflects and honours our local cultures, traditions, and values.

We look forward to continuing this journey with you as we work towards delivering a hospital that serves everyone with respect, dignity, and care.

For more information about the project and to sign up to get the latest news, announcements and project updates delivered straight to your inbox, visit:

 [widebay.health.qld.gov.au/new-bundaberg-hospital](http://widebay.health.qld.gov.au/new-bundaberg-hospital)

 07 4303 8540

 [wbhhs-newhospital@health.qld.gov.au](mailto:wbhhs-newhospital@health.qld.gov.au)